

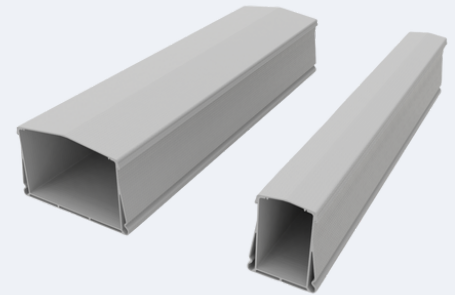
Kratos Cable Tray

Strength Without the Steel

The Kratos Cable Tray delivers strength, versatility, and efficiency for critical infrastructure. Its double-walled design ensures durability, while weather-resistant construction makes it ideal for year-round use. Cost-effective and proven as the smart alternative to steel, Kratos offers long life and low maintenance across highways, railways, and bridges.

Why Kratos is the Best Choice

- Exceptional strength thanks to its advanced double-walled system and special material composition.
- Versatile installation on uprights or any structure using a wide range of fasteners.
- Weather-resistant design built to withstand all challenging European conditions year-round.
- Quick installation with 6-metre lengths requiring only one support per section.
- Cost-effective alternative to steel, eliminating the need for extra plastic lining.
- Long lifespan with significantly lower maintenance costs compared to steel solutions.
- Widely used across diverse infrastructure sectors at critical juncture points such as highways, rail tracks, and bridges.



In Short

- Exceptional Strength & Durability
- Easy & Versatile Installation
- Weather-Resistant & Low Maintenance
- Cost-Effective & Widely Applied

Variants and sizes

- 100 mm wide (length 6 metres)
- 250 mm wide (length 6 metres)

More questions?

Get in touch with PION Cable Protection or one of our trusted distribution partners near you.



- 🌐 www.pioncableprotection.com
- ✉ sales@pioncableprotection.com
- ☎ +31 (0)33 253 8630

